

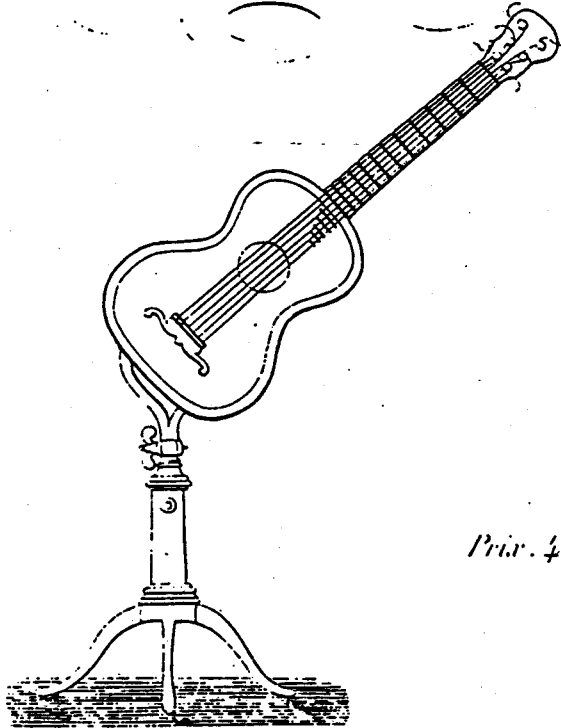
LE FANDANGO

POUR

Guitare,

PAR

D. AGUADO.



Op. 16.

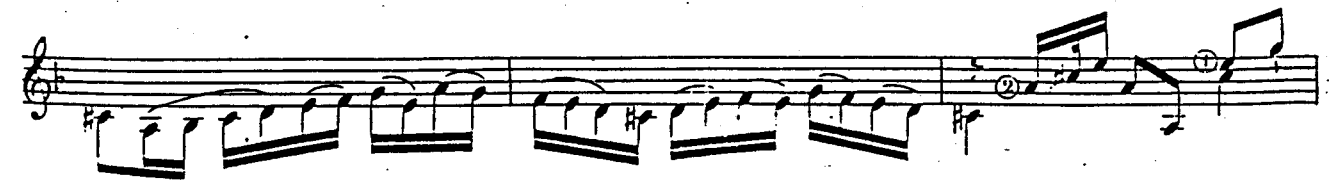
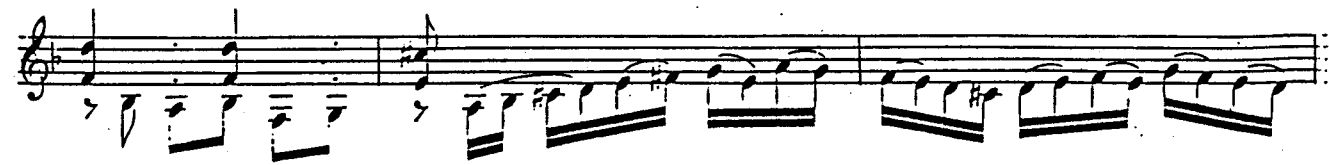
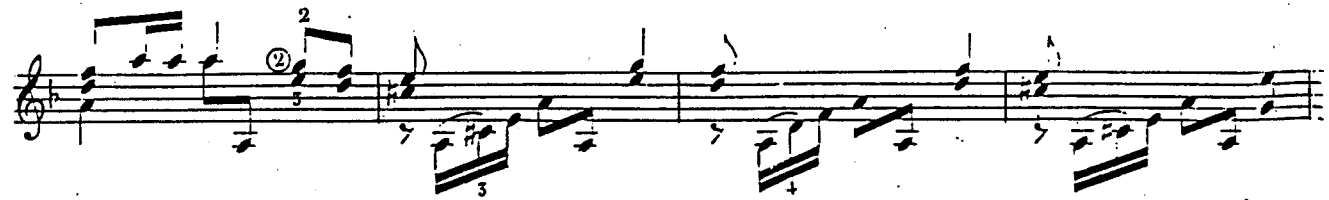
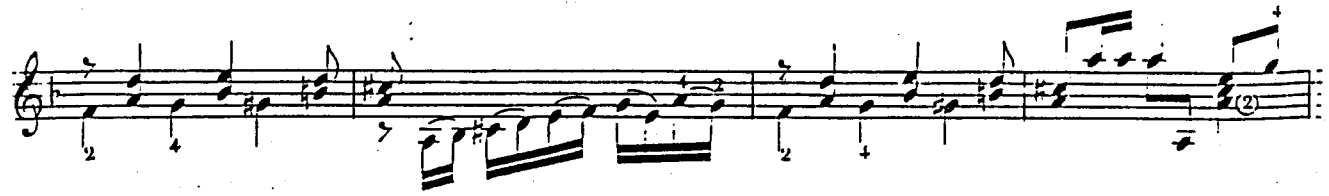
Extrait de l'Album

Prix. 4<sup>l</sup>. 50.

À PARIS, chez l'Éditeur, boulevard du TEMPODESON, en face la guitare, Place des Mathéus, N<sup>o</sup> 3

et chez les principaux Libraires de Musique.





First musical staff, featuring a treble clef and a key signature of one sharp (F#). The staff contains a sequence of notes and rests, with circled numbers 1 and 2 indicating specific measures. The notes are primarily eighth and sixteenth notes, often beamed together.

Second musical staff, continuing the melody from the first staff. It features a treble clef and a key signature of one sharp. The notation includes eighth and sixteenth notes, with some notes marked with a '+' sign above them.

Third musical staff, continuing the melody. It features a treble clef and a key signature of one sharp. The notation includes eighth and sixteenth notes, with a circled number 2 in the first measure.

Fourth musical staff, continuing the melody. It features a treble clef and a key signature of one sharp. The notation includes eighth and sixteenth notes, with some notes marked with a '+' sign above them.

Fifth musical staff, continuing the melody. It features a treble clef and a key signature of one sharp. The notation includes eighth and sixteenth notes, with some notes marked with a '+' sign above them.

Sixth musical staff, continuing the melody. It features a treble clef and a key signature of one sharp. The notation includes eighth and sixteenth notes, with some notes marked with a '+' sign above them and circled numbers 3 and 4.

Seventh musical staff, continuing the melody. It features a treble clef and a key signature of one sharp. The notation includes eighth and sixteenth notes, with some notes marked with a '+' sign above them and circled numbers 3 and 4.

First musical staff, featuring treble and bass clefs, a key signature of one sharp (F#), and a 3/4 time signature. The staff contains two lines of music. The upper line includes triplets and a group of four notes. The lower line contains a bass line with eighth and sixteenth notes.

Second musical staff, continuing the piece. It features treble and bass clefs, a key signature of one sharp (F#), and a 3/4 time signature. The upper line has eighth and sixteenth notes, while the lower line has a bass line with eighth notes.

Third musical staff, continuing the piece. It features treble and bass clefs, a key signature of one sharp (F#), and a 3/4 time signature. The upper line has eighth and sixteenth notes, while the lower line has a bass line with eighth notes.

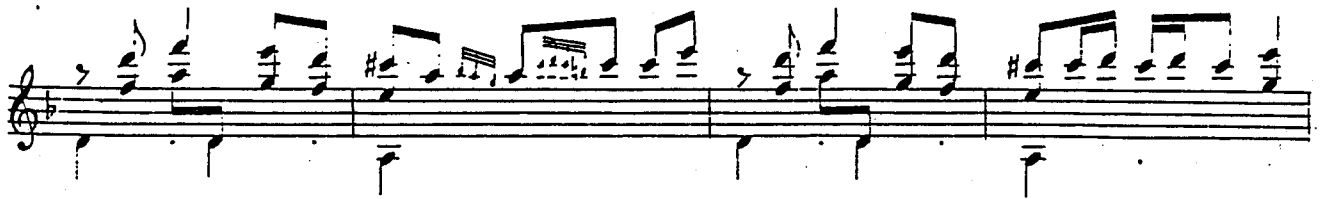
Fourth musical staff, continuing the piece. It features treble and bass clefs, a key signature of one sharp (F#), and a 3/4 time signature. The upper line has eighth and sixteenth notes, while the lower line has a bass line with eighth notes.

Fifth musical staff, continuing the piece. It features treble and bass clefs, a key signature of one sharp (F#), and a 3/4 time signature. The upper line has eighth and sixteenth notes, while the lower line has a bass line with eighth notes.

Sixth musical staff, continuing the piece. It features treble and bass clefs, a key signature of one sharp (F#), and a 3/4 time signature. The upper line has eighth and sixteenth notes, while the lower line has a bass line with eighth notes.

Seventh musical staff, continuing the piece. It features treble and bass clefs, a key signature of one sharp (F#), and a 3/4 time signature. The upper line has eighth and sixteenth notes, while the lower line has a bass line with eighth notes.

This image displays a handwritten musical score consisting of eight staves of music. The notation is written in black ink on a white background. Each staff begins with a treble clef and a key signature of one flat (B-flat). The music is written in a style characteristic of the late 19th or early 20th century, featuring a variety of note values including eighth and sixteenth notes, as well as rests. The first staff contains a melodic line with some slurs. The second staff continues this melodic line. The third and fourth staves feature a more complex texture with multiple voices, including some notes with stems pointing downwards. The fifth and sixth staves show a continuation of this multi-voice texture. The seventh and eighth staves conclude the piece with a final melodic line and some chordal accompaniment. The handwriting is clear and legible, with some minor ink smudges and corrections visible throughout the score.



A musical staff in treble clef with a key signature of one sharp (F#). It contains a series of rapid sixteenth-note passages, primarily consisting of eighth-note pairs beamed together. The notes are mostly ascending and then descending, with some chromatic movement. The staff concludes with a few notes and a fermata.

A musical staff in treble clef with a key signature of one sharp (F#). It features a series of eighth-note patterns, often beamed in pairs, with some notes tied across bar lines. The rhythm is steady and rhythmic.

A musical staff in treble clef with a key signature of one sharp (F#). It begins with the instruction "ritardando." in a smaller font. The notes are mostly quarter and eighth notes, with some rests. The tempo is indicated to be slowing down. The staff ends with the instruction "Allegro." in a larger font, indicating a change in tempo.

A musical staff in treble clef with a key signature of one sharp (F#). It contains eighth-note patterns, some beamed in pairs, with some notes tied across bar lines. The rhythm is steady and rhythmic.

A musical staff in treble clef with a key signature of one sharp (F#). It contains eighth-note patterns, some beamed in pairs, with some notes tied across bar lines. The rhythm is steady and rhythmic.

A musical staff in treble clef with a key signature of one sharp (F#). It contains eighth-note patterns, some beamed in pairs, with some notes tied across bar lines. The rhythm is steady and rhythmic.

A musical staff in treble clef with a key signature of one sharp (F#). It contains eighth-note patterns, some beamed in pairs, with some notes tied across bar lines. The rhythm is steady and rhythmic. A circled number "2" is visible at the beginning of the staff.





